

# Leukaemia Section

## Short Communication

### t(3;17)(q26;q22)

Jean-Loup Huret

Genetics, Dept Medical Information, University of Poitiers, CHU Poitiers Hospital, F-86021 Poitiers, France

Published in Atlas Database: July 2007

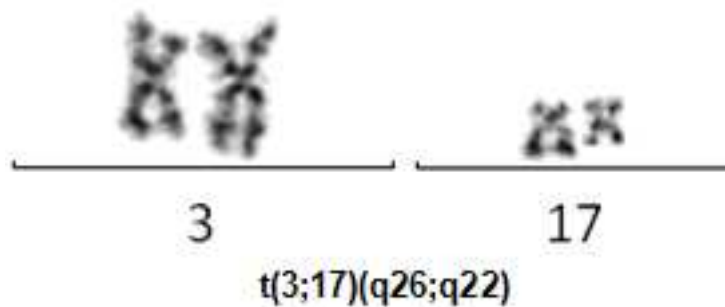
Online updated version: <http://AtlasGeneticsOncology.org/Anomalies/t0317q26q22ID1282.html>

DOI: 10.4267/2042/38532

This work is licensed under a Creative Commons Attribution-Non-commercial-No Derivative Works 2.0 France Licence.

© 2008 Atlas of Genetics and Cytogenetics in Oncology and Haematology

## Identity



t(3;17)(q26;q22) G-banding – Courtesy Melanie Zenger and Claudia Haferlach.

## Clinics and pathology

### Disease

Chronic myelogenous leukaemia with t(9;22)(q34;q11) and blast crisis of CML (BC-CML) (4 cases altogether), other myeloproliferative syndromes, Acute myeloid leukaemia (AML) in 4 cases (one M1, 2 therapy related AML, one of which after breast cancer).

### Epidemiology

At least 9 cases to date, aged 62 years (median, range: 49-78); sex ratio was 5M/3F.

### Prognosis

No data.

## Cytogenetics

### Cytogenetics morphological

Sole anomaly in 3 cases, with t(9;22)(q34;q11) in 4 cases (one of which was a complex translocation), with del(5q) (1 case), and with del(7q), and +21 in 1 case.

## Genes involved and Proteins

**Note:** The partner of EVI1 is yet unknown.

### EVI1

**Location:** 3q26.2

### Protein

Transcription factor; EVI1 targets include: GATA2, ZBTB16/PLZF, ZFPM2/FOG2, JNK and the PI3K/AKT pathway. Role in cell cycle progression, likely to be cell-type dependant; antiapoptotic factor; involved in neuronal development organogenesis; role in hematopoietic differentiation.

## References

- Mecucci C, Michaux JL, Broeckaert-Van Orshoven A, Symann M, Boogaerts M, Kulling G, Van den Berghe H. Translocation t(3;17)(q26;q22): a marker of acute disease in myeloproliferative disorders? *Cancer Genet Cytogenet* 1984;12:111-119.
- Mugneret F, Solary E, Favre B, Caillot D, Sidaner I, Guy H. New case of t(3;17)(q26;q22) as an additional change in a Philadelphia-positive chronic myelogenous leukemia in acceleration. *Cancer Genet Cytogenet* 1992;60:90-92.

Pedersen-Bjergaard J, Pedersen M, Roulston D, Philip P. Different genetic pathways in leukemogenesis for patients presenting with therapy-related myelodysplasia and therapy-related acute myeloid leukemia. *Blood* 1995;86:3542-3552.

Charrin C, Belhabri A, Treille-Ritouet D, Theuil G, Magaud JP, Fiere D, Thomas X. Structural rearrangements of chromosome 3 in 57 patients with acute myeloid leukemia: clinical, hematological and cytogenetic features. *Hematol J* 2002;3:21-31.

Barjesteh van Waalwijk van Doorn-Khosrovani S, Erpelinck C, van Putten WL, Valk PJ, van der Poel-van de Luytgaarde S, Hack R, Slater R, Smit EM, Beverloo HB, Verhoef G, Verdonck LF, Ossenkoppele GJ, Sonneveld P, de Greef GE, Löwenberg B, Delwel R. High EVI1 expression predicts poor survival in acute myeloid leukemia: a study of 319 de novo AML patients. *Blood* 2003;101:837-845.

Poppe B, Dastugue N, Vandesompele J, Cauwelier B, De Smet B, Yigit N, De Paepe A, Cervera J, Recher C, De Mas V, Hagemeijer A, Speleman F. EVI1 is consistently expressed as principal transcript in common and rare recurrent 3q26 rearrangements. *Genes Chromosomes Cancer* 2006;45:349-356.

Wieser R. The oncogene and developmental regulator EVI1: expression, biochemical properties, and biological functions. *Gene* 2007;396:346-357.

---

*This article should be referenced as such:*

Huret JL. t(3;17)(q26;q22). *Atlas Genet Cytogenet Oncol Haematol.*2008;12(3):246-247.

---