

Leukaemia Section

Short Communication

t(1;6)(p35;p25)

Jean-Loup Huret

Genetics, Dept Medical Information, UMR 8125 CNRS, University of Poitiers, CHU Poitiers Hospital, F-86021 Poitiers, France (JLH)

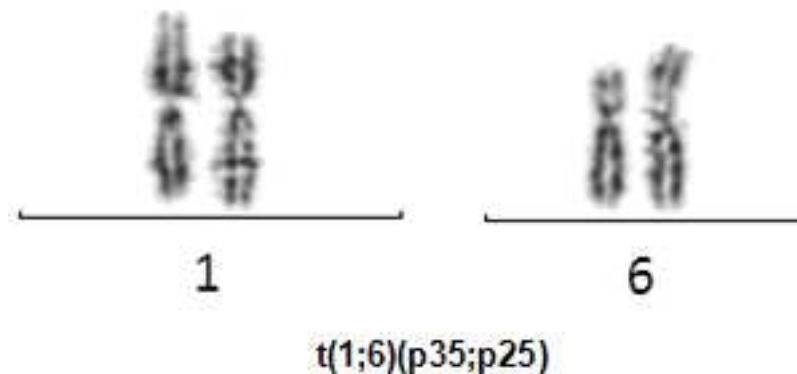
Published in Atlas Database: January 2005

Online updated version : <http://AtlasGeneticsOncology.org/Anomalies/t0106p35p25ID1378.html>

DOI: 10.4267/2042/38157

This work is licensed under a Creative Commons Attribution-Noncommercial-No Derivative Works 2.0 France Licence.
© 2005 Atlas of Genetics and Cytogenetics in Oncology and Haematology

Identity



t(1;6)(p35;p25) G- banding - Courtesy Melanie Zenger and Claudia Haferlach.

Clinics and pathology

Disease

Chronic lymphocytic leukemia (CLL)

Phenotype/cell stem origin

Unmutated status of IgVH (an unfavourable prognostic feature) was found in all cases.

Epidemiology

8 patients to date, representing 0.5% of CLL cases in a country based survey; sex ratio: 6 male/2 female patients, aged 33-81 years (med: 62.5 years).

Clinics

Two cases in Binet stage A, 4 in stage B, 2 in stage C. Normal LDH values in 7 of 8.

Prognosis

Yet unknown (median follow up is only 28 months), but 3 patients developed a diffuse large B-cell lymphoma (DLBCL), and 3 patients (2 of which with DLBCL) died at 29, 76, and 95 months.

Cytogenetics

Additional anomalies

Sole anomaly in three cases, with +12 in three cases, with 9q anomalies in three, del(11q) in two, 17p anomalies in two, 17q anomalies in two; del(11q), and 17p anomalies are poor prognostic factors in CLL.

Genes involved and proteins

Note

IRF4 (6p25.2) is possibly involved in the translocation. The gene in 1p35.3 is unknown.

To be noted

Case Report

Translocation t(1;6)(p35;p25) in B-cell lymphoproliferative disorder with evolution to Diffuse Large B-cell Lymphoma.

Chronic lymphocytic leukaemia/Small lymphocytic lymphoma (CLL/SLL) associated with translocation t(1;6)(p35;p25) as part of complex karyotype.

References

Michaux L, Wlodarska I, Rack K, Stul M, Criel A, Maerevoet M, Marichal S, Demuynck H, Mineur P, Kargar Samani K, Van Hoof A, Ferrant A, Marynen P, Hagemeijer A. Translocation t(1;6)(p35.3;p25.2): a new recurrent aberration in "unmutated" B-CLL. *Leukemia*. 2005 Jan;19(1):77-82

This article should be referenced as such:

Huret JL. t(1;6)(p35;p25). *Atlas Genet Cytogenet Oncol Haematol*. 2005; 9(1):32-33.
