

Leukaemia Section

Short Communication

t(1;13)(q32;q14)

Jean-Loup Huret

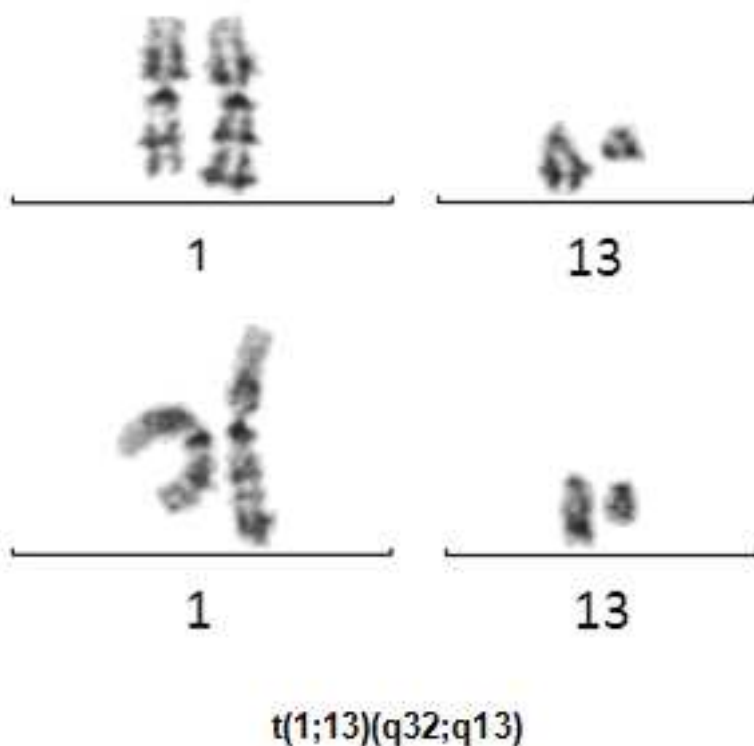
Genetics, Dept Medical Information, UMR 8125 CNRS, University of Poitiers, CHU Poitiers Hospital, F-86021 Poitiers, France (JLH)

Published in Atlas Database: July 2002

Online updated version: <http://AtlasGeneticsOncology.org/Anomalies/t0113q32q14ID1251.html>
DOI: 10.4267/2042/37904

This work is licensed under a Creative Commons Attribution-Noncommercial-No Derivative Works 2.0 France Licence.
© 2002 Atlas of Genetics and Cytogenetics in Oncology and Haematology

Identity



t(1;13)(q32;q13) G- banding - Courtesy Melanie Zenger and Claudia Haferlach.

Clinics and pathology

Disease

Diffuse large B-cell lymphoma (DLBCL).

Epidemiology

Only 2 cases so far, aged 39 and 57 years; 2 male patients.

Prognosis

One patient died at 10 mths, the other is alive at 24 months+.

Cytogenetics

Cytogenetics morphological

Unbalanced form der(1)t(1;13) in one case.

Cytogenetics molecular

The anomaly had been uncovered by SKY.

Genes involved and proteins

Note

Genes involved are yet unknown.

References

Nanjangud G, Rao PH, Hegde A, Teruya-Feldstein J, Donnelly G, Qin J, Jhanwar SC, Zelenetz AD, Chaganti RS. Spectral karyotyping identifies new rearrangements, translocations, and clinical associations in diffuse large B-cell lymphoma. *Blood*. 2002 Apr 1;99(7):2554-61

This article should be referenced as such:

Huret JL. t(1;13)(q32;q14). *Atlas Genet Cytogenet Oncol Haematol*. 2002; 6(4):294-295.
