

Gene Section

Short Communication

ABL2 (Abelson homolog 2)

Jean-Loup Huret

Genetics, Dept Medical Information, University of Poitiers, CHU Poitiers Hospital, F-86021 Poitiers, France (JLH)

Published in Atlas Database: February 2000

Online updated version : <http://AtlasGeneticsOncology.org/Genes/ABL2ID226.html>

DOI: 10.4267/2042/37579

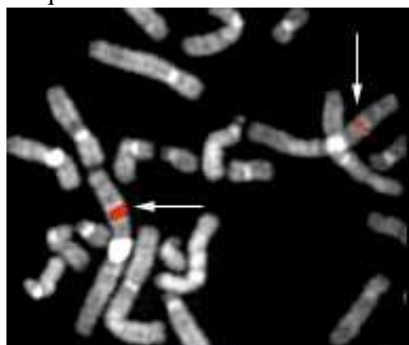
This work is licensed under a Creative Commons Attribution-Noncommercial-No Derivative Works 2.0 France Licence.
© 2000 Atlas of Genetics and Cytogenetics in Oncology and Haematology

Identity

Other names: ARG (Abelson related gene); ABLL

HGNC (Hugo): ABL2

Location: 1q25



ABL2 (1q25) - Courtesy Mariano Rocchi, Resources for Molecular Cytogenetics.

DNA/RNA

Transcription

Alternate splicing in 5 prime; 3.8 kb mRNA; ORF: 3548 bp.

Protein

Description

1182 amino acids; 128 kDa; comprises SH3 and SH2 domains, a protein tyrosine kinase domain, a nuclear localization domain.

Function

Cytoplasmic tyrosine kinase.

Homology

SRC homology; closely related to ABL1.

Implicated in

t(1;12)(q25;p13) --> ABL2-ETV6

Disease

Acute non lymphocytic leukemia.

Abnormal protein

The fusion protein is composed of the HLH oligomerization domain of ETV6 and the SH2, SH3, and protein tyrosine kinase domains of ABL2.

References

Kruh GD, King CR, Kraus MH, Popescu NC, Amsbaugh SC, McBride WO, Aaronson SA. A novel human gene closely related to the *abl* proto-oncogene. *Science*. 1986 Dec 19;234(4783):1545-8

Seldin MF, Kruh GD. Mapping of *Abl1* within a conserved linkage group on distal mouse chromosome 1 syntenic with human chromosome 1 using an interspecific cross. *Genomics*. 1989 Feb;4(2):221-3

Kruh GD, Perego R, Miki T, Aaronson SA. The complete coding sequence of *arg* defines the Abelson subfamily of cytoplasmic tyrosine kinases. *Proc Natl Acad Sci U S A*. 1990 Aug;87(15):5802-6

Cazzaniga G, Tosi S, Aloisi A, Giudici G, Daniotti M, Pioltelli P, Kearney L, Biondi A. The tyrosine kinase *abl*-related gene ARG is fused to ETV6 in an AML-M4Eo patient with a t(1;12)(q25;p13): molecular cloning of both reciprocal transcripts. *Blood*. 1999 Dec 15;94(12):4370-3

This article should be referenced as such:

Huret JL. ABL2 (Abelson homolog 2). *Atlas Genet Cytogenet Oncol Haematol*. 2000; 4(1):9.