

Leukaemia Section

Short Communication

t(3;13)(q27;q14)

Jean-Loup Huret, Jean-Luc Lai

Genetics, Dept Medical Information, University of Poitiers, CHU Poitiers Hospital, F-86021 Poitiers, France (JLH); INSERM Unité 524, Institut de Recherche sur le Cancer de Lille, Lille, France (JLL)

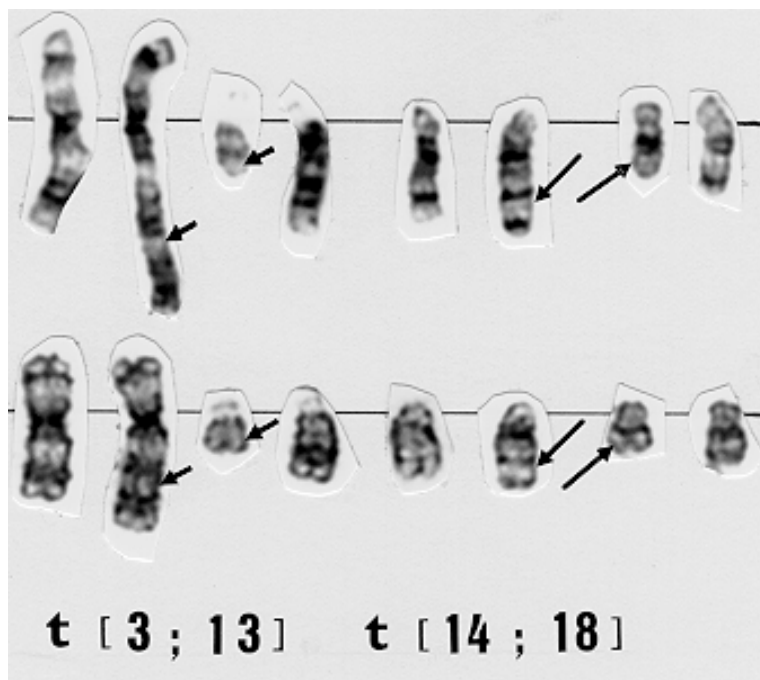
Published in Atlas Database: January 1998

Online version is available at: <http://AtlasGeneticsOncology.org/Anomalies/t0313.html>

DOI: 10.4267/2042/32104

This work is licensed under a Creative Commons Attribution-Non commercial-No Derivative Works 2.0 France Licence.
© 1998 Atlas of Genetics and Cytogenetics in Oncology and Haematology

Identity



t(3;13)(q27;q14-21), t(14;18)(q32;q21) G-banding - Courtesy Jean-Luc Lai.

Clinics and pathology

Disease

NHL

Phenotype / cell stem origin

Found in various types of NHL (e.g. Burkitt's lymphoma and follicular lymphoma); the translocation is therefore likely to be a secondary event in the course of the disease.

Epidemiology

Only 3 cases available to date; all three are adult female patients.

Cytogenetics

Cytogenetics, morphological

Found twice (out of three occurrence) as a secondary anomaly: following the well known t(8;14)(q24;q32) and t(14;18)(q32;q21).

Additional anomalies

del(6q) found in 2 of 3 cases; the karyotype may be complex.

Genes involved and Proteins

BCL6

Location: 3q27

L-plastin

Location: 13q14-21

References

Laï JL, Daudignon A, Kerckaert JP, Galiegue-Zouitina S, Detourmignies L, Morel P, Bauters F, Fenaux P. Translocation (3;13)(q27;q14): a nonrandom and probably secondary structural change in non-Hodgkin lymphomas. *Cancer Genet Cytogenet* 1998 Jun;103(2):140-3.

This article should be referenced as such:

Huret JL, Laï JL. t(3;13)(q27;q14). *Atlas Genet Cytogenet Oncol Haematol.*1998;2(1):22-23.
